



AAA PatientCONNECT™

Patient Support for
LUTATHERA® (lutetium Lu 177 dotatate)

AAA PatientCONNECT™
www.aapatientconnect.com
Phone: 1-844-NETS-AAA
FAX: 844-NETS-FAX



AAA PatientCONNECT™ — Committed to supporting your access to LUTATHERA® (lutetium Lu 177 dotatate)

AAA PatientCONNECT™ provides services to support your access to LUTATHERA® treatment. This may include:



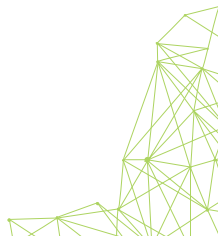
Patient Financial Assistance

- Uninsured Patient Assistance
- Commercial Patient Copay Assistance



Reimbursement Support Services

- Insurance benefits Verification
- Prior Authorization Support
- Claims appeal Support
- Billing and Coding Support
- Payer Policy Support



Assistance for Uninsured Patients

AAA PatientCONNECT™ provides LUTATHERA® (lutetium Lu 177 dotatate) at no cost to patients who are uninsured and meet certain eligibility criteria*.

You may qualify for assistance if:

- You are uninsured for LUTATHERA® treatment
- You meet financial criteria based on adjusted gross household income. Documentation of income is required when applying. Speak with a patient navigator to learn more about acceptable forms of documentation.
- Your LUTATHERA® treatment is being provided in a hospital outpatient setting or a physician office
- You are a citizen or resident of the United States

*Eligibility restrictions may apply. For full terms and conditions, please call AAA PatientCONNECT™ at 1-844-NETS-AAA. Patients who are enrolled in any type of government insurance or reimbursement programs are not eligible. As a condition precedent of the copayment support provided under this program, e.g., copay refunds, participating patients and pharmacies are obligated to inform insurance companies and third-party payers of any benefits they receive and the value of this program, as required by contract or otherwise. Void where prohibited by law or restricted.

For more information, contact AAA PatientCONTACT™ at
1-844-NETS-AAA (1-844-638-7222)

Financial Assistance for Patients with Commercial Insurance

AAA PatientCONNECT™ provides copay assistance for LUTATHERA® (lutetium Lu 177 dotatate) treatment to patients who have commercial insurance and meet certain eligibility criteria*.

You may qualify for assistance if:

- You have commercial insurance
- Your LUTATHERA® treatment is being provided in a hospital outpatient setting or a physician office
- You are a citizen or resident of the United States

Copay assistance is not available through the AAA PatientCONNECT™ program for patients who have public or government insurance, such as through Medicare, Department of Veterans Affairs, or the Department of Defense. AAA PatientCONNECT™ is not an insurance program and is not a substitute for medical insurance.

*Eligibility restrictions may apply. For full terms and conditions, please call AAA PatientCONNECT™ at 1-844-NETS-AAA. Patients who are enrolled in any type of government insurance or reimbursement programs are not eligible. As a condition precedent of the copayment support provided under this program, e.g., copay refunds, participating patients and pharmacies are obligated to inform insurance companies and third-party payers of any benefits they receive and the value of this program, as required by contract or otherwise. Void where prohibited by law or restricted.





Enrolling in Copay Assistance

To enroll in financial assistance for commercial insurance, your doctor must submit a completed and signed copay assistance application to AAA PatientCONNECT™ on your behalf. Copay assistance applications are available online at www.aaapatientconnect.com.

By signing this application, you agree that, if approved, all copay assistance funds distributed will be used only for the cost of LUTATHERA® (lutetium Lu 177 dotatate).



Receiving Copay Financial Assistance

Upon approval, AAA PatientCONNECT™ will send an approval letter and outline of the copay assistance funds that are available for your treatment. Proof of treatment and claims must be submitted to AAA PatientCONNECT™ to receive a distribution of copay assistance funds. Upon receipt, copay assistance funds will be processed and distributed to you for payment of your LUTATHERA® treatment copay.

A decorative graphic in the bottom left corner consisting of a complex, interconnected network of green lines forming a mesh-like structure.

For more information, contact AAA PatientCONTACT™ at
1-844-NETS-AAA (1-844-638-7222)

AAA PatientCONNECT™
8:00am to 8:00pm EST
Monday Through Friday
www.aaapatientconnect.com
Phone: 1-844-NETS-AAA
Fax: 1-844-NETS-FAX

All rights reserved.

© 2018 Advanced Accelerator Applications USA, Inc.

LUTATHERA® is a registered trademark of Advanced Accelerator Applications SA.

AAA PatientCONNECT™ is a trademark of Advanced Accelerator Applications S.A.

AAA-AAAPC-US-0005 | 02/2018

